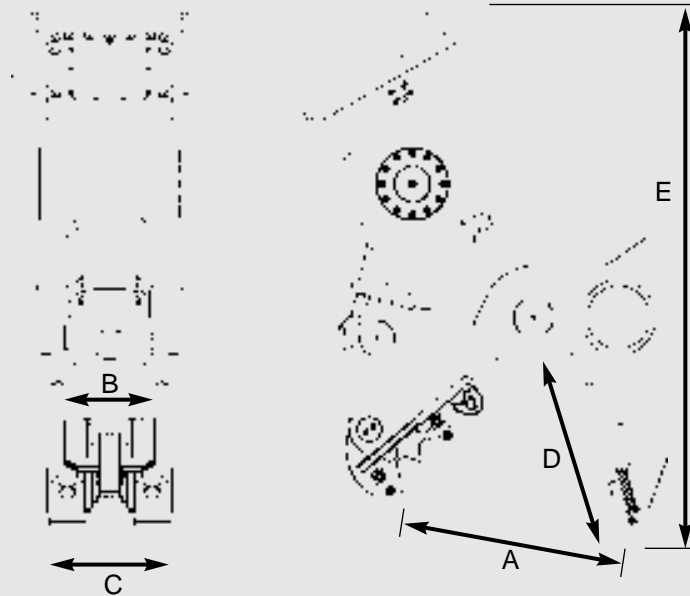


- Demolition and Sorting Grabs
- Rotating Pulverisers
- Demolition equipment
- Recycling Equipment
- Static Pulverisers
- Multi-Quick Processors
- Shears
- Demolition Equipment
- Recycling Equipment

MAIN FEATURES

- Excellent speed, power to weight ratio.
- Exchangeable ground tooth plate
- Exchangeable teeth
- Exchangeable scraping teeth
- Exchangeable shrouds (can be turned)
- Overdimensioned pivot point
- Robust pivot points of the cylinder
- Exchanging of wearparts on site
- Highest optimal speed and power from the DemaPower-System



Demarec static pulverisers are by default extremely robust and fully equipped, because Demarec accepts no compromises in quality!

Technical data Demarec static pulverisers

Type	DSP-30	DSP-45	DSP-60
Carrier weight*	20-35 ton	30-50 ton	42-65 ton
Weight**	2150 kg	2650 kg	3600 kg
Closing force frontteeth (ca.)	900 KN	1200 KN	1400 KN
<i>Dimensions</i>			
Jaw opening A	900 mm	1000 mm	1200 mm
Width of upper jaw B	350 mm	400 mm	450 mm
Width of lower jaw C	490 mm	525 mm	565 mm
Depth D	885 mm	945 mm	1070 mm
Height E	1910 mm	2100 mm	2450 mm
Length of cutting blades***	200 mm	200 mm	250 mm
<i>Hydraulic</i>			
Opening/Closing P _{max}	350 bar	350 bar	350 bar
Flow	150-250 L/min	200-300 L/min	300-400 L/min
Cycle time Opening/Closing	2,0 / 2,3 sec.	2,0 / 2,9 sec.	2,0 / 2,8 sec.

DSP-05-05-EN

*Depending of lifting capacity of carrier **Weght including standard brachet ***Optional

Subject to change without notice.

Static pulverisers



Dealer:

The Demarec Company

Demarec develops and manufactures equipment for use in the demolition and recycling industry. This equipment is generally mounted on excavators and shovels.

Demarec is innovative in the area of product development and design and one of Demarec's most important objectives is that the equipment has added value for the user.

This is expressed in the favourable operating costs of the equipment as a result of the excellent price-quality ratio and low maintenance costs. At the same time the serviceability is already taken into account during development, and the design receives the utmost attention. Very important at Demarec is, above all, offering an excellent level of service to our customers.

Demarec has a wealth of experience at its disposal because both of Demarec's founders (Ruud de Gier and Marcel Vening) have more than 20 years of experience in the industries. They know therefore exactly what is relevant in the market and what the market demands. Product development is therefore based on experience.

The other Demarec employees all have extensive experience in their area of expertise. This makes Demarec the place for all your questions and needs.

In the coming years, Demarec will regularly introduce new products to the market; new generations of existing products as well as completely new products.



DSP-45

In 2003 Demarec introduced a new generation of static pulverisers. The static model has been developed for secondary demolition - breaking-up the concrete and freeing reinforcing steel from it. Pulverising at the demolition site reduces the costs of transport and recycling. But this power crusher is just as efficient at the recycling plant.

Robust Innovation = Low total cost of ownership



Demarec pulverisers are fitted with the DemaPower-System. This new cylinder technique has been developed in house at Demarec.

The DemaPower-System has a double-action differential technique, which means the pulveriser has extremely fast cycle times. The jaw can open and close in 5 seconds.

Furthermore the cylinder has 20% more power than conventionally constructed cylinders thanks to the application of two pressure chambers in the cylinder.

This gives an enormous increase in working capacity of as much as 30%.

This means you can choose either the same weight as the pulveriser with a higher capacity or a lighter Demarec pulveriser in combination with a lighter excavator while retaining capacity.

Therefore Demarec can always offer an extremely economical solution.

Optimal jaw construction

The upper jaw has a ground tooth plate that has two front teeth which ensure outstanding penetration into the concrete. The front teeth go between the shrouds in the lower jaw, so the reinforcing steel is always separated optimally from the concrete.

Demarec static pulverisers are supplied without cutting blades as standard. This means that the reinforcing steel can be optimally

separated from the concrete without small pieces of steel being cut off.

Exchangeable wear parts

Unique to Demarec pulverisers is that the lower and upper clamping jaws are made entirely of exchangeable wear parts. This renders welding-on virtually unnecessary and prevents fatigue of the parent material. The movable jaw is fitted with an exchangeable ground tooth plate. The movable jaw is fitted with two exchangeable teeth. The fixed jaw is fitted with exchangeable scraping teeth. The shrouds in the fixed jaw can not only be exchanged but also turned. Demarec static pulverisers are therefore extremely cost-effective to use.



DSP-60



DSP-30



DSP-60



DSP-45

